



the
source

Your Place for Women's Health

HELPING OTHERS FIND THE NARROW PATH

BY CAROLYN CLINE, PRESIDENT & CEO

Wow – what a year! I do not think any of us had a clue that 2020 would be a year when we would experience so many changes and challenges. Yet, we have been blessed to see God move in amazing ways! He has stretched us out of our comfort level and expanded our creativity in thinking how to better handle all phases of our ministry.

We ended 2019 with great hope and expectations. That hope and expectation continues to grow! We had exciting news to share with you at our annual Light of Life Dinner that was scheduled for April 3rd. We just cannot contain our joy, so we will be sharing some of that information with you now.

The challenge always before us: How can we serve more women in North Texas with reproductive health services in such a way that we can influence and help transform their decisions toward ones which are life-affirming and ultimately God-honoring? We have found three main means we believe will address this need:

- Increased medical services, making The Source North Texas the first point of contact for young women when they initially begin to look for reproductive health services
- Educate and coach women how to make lifestyle choices that will give them their best health
- Operate and offer services in locations where needs are great and provide ease of accessibility to services.

"But the gateway to LIFE is very narrow and the road is difficult, and only a few even find it." Matt. 7:14, NLT

IN THIS ISSUE

EXPANDED MEDICAL SERVICES

LIFESTYLE MEDICAL MODEL

NEW SOUTHWEST CLINIC TO OPEN SOON!

Involved for Life, Inc.
dba The Source for Women NTX
fka Downtown Pregnancy Center
& Sonograms on Site
525 N. Ervay St.
Dallas, TX 75201
972-636-4460
www.GetInvolvedForLife.com
www.TheSource.org

EXPANDED MEDICAL SERVICES

As we have been sharing with you over the past couple of years, we are moving from a pregnancy center model to a comprehensive women's healthcare center. We have spent much time, effort, and resources to develop a sound and strong foundation in order to take this major step with success. I would welcome answering any questions of all that involves, so please feel free to contact me for more information.

What I know you will be delighted to hear is that we have tripled the size of our medical staff and are continuing to grow that area. We have also added additional exam rooms and are purchasing needed medical supplies and equipment as funds allow. **We now offer a comprehensive medical menu of services for women in their child-bearing years - our target market.**

	Basic PRCs	Planned Parenthood	the source
Pregnancy Testing	X	X	X
Ultrasound	X	X	X
STI/STD Testing and Treatment		X	X
Well Woman Exams		X	X
Sex Education		X	X
Pregnancy Prevention Resources		X	X
Abortion Services		X	
Morning After Pill		X	
RU 486 ("Abortion Pill") Reversal			X
Material Assistance	X		X
Parenting Classes	X		X
Gospel-centered Spiritual Care	X		X
Counseling and Ongoing Support	X		X

For women facing unplanned pregnancies, The Source is a unique place to find real options and vital medical care.

TRANSFORMATIONAL HEALTH

We have also developed and piloted in-house a comprehensive healthcare approach, the Lifestyle Medical Model™ (LMM). This proprietary model helps patients improve their personal health - physical, emotional, and spiritual - by helping them develop lifestyle self-awareness and noting the resulting impact of choices.

Within our supportive, loving environment, a patient is taught and encouraged to make changes that will help her achieve and maintain her best health, one step at a time. And, most importantly, we know the importance of sharing that all true change comes through a relationship with Jesus Christ and the transforming power of the Holy Spirit.

LOCATION, LOCATION, LOCATION

We understand making our services no or low cost is very important. But equally important is the accessibility the underserved have to our services. Pre-pandemic, we have always been blessed with an amazing geographic service area. **In 2019, we served women from 165 zip codes, 32 counties and 5 states!** But when our new normal meant sheltering-in-place for most, even though we were able to stay open as an essential service provider, many women were afraid to leave their homes. As we have all heard and certainly recently witnessed, necessity IS the mother of invention.

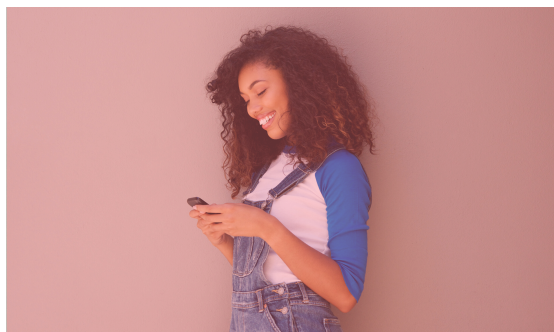
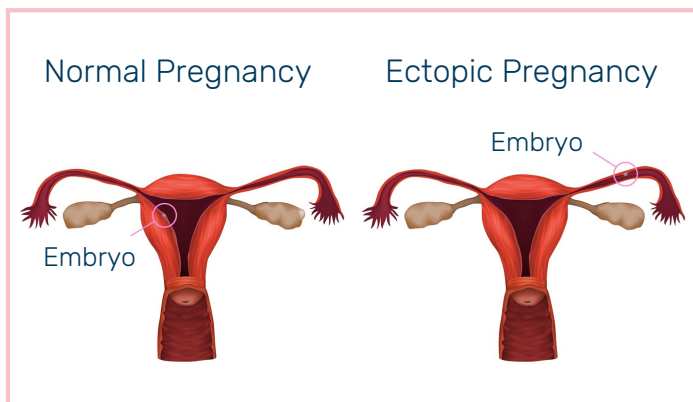


We quickly pivoted and acquired a telemedicine program that was HIPAA compliant to offer an opportunity for women to get the education they needed regarding abortion, pregnancy options, health concerns and more. Using this new communication gift allowed us to quickly adapt to immediate needs and establish a caring relationship with women who had concerns about coming into a clinical setting.

Once a relationship was established and proper health screenings completed via telemedicine, women were scheduled to come into our health center for their needed ultrasounds to verify they had a developing, healthy pregnancy. **During this Covid-19 critical time, the Lord sent two different women to us who in fact did not have healthy pregnancies but rather had life-threatening situations with ectopic pregnancies.** We were able to provide both with the needed information and an immediate referral to the closest hospital Emergency Room, one for surgery and one for medical treatment.

Telemedicine has proven its worth to us and will continue to be a strategic way we will reach and serve women with needed health services.

We also know it is worthy of our consideration to determine where we should be located physically to serve those most likely to abort. In late December 2019, our Board made the prudent decision to purchase the building of a retired OB/GYN. **This new satellite location of The Source is in southwest Dallas where we found, through zip code research, is one of the most abortion-dense areas in our community.**



Positioned less than half a mile from Planned Parenthood's largest surgical center in North Texas, we know we will attract a high percentage of abortion-minded women. Our Lifestyle Medical Model™ is critical to reaching this underserved demographic who is burdened by chronic medical conditions like hypertension, diabetes, and heart disease. These conditions contribute to high maternal and infant mortality among this particular population.

We are committed to serving in this area, so renovations are underway! Though slowed by the pandemic, **we are moving forward and have plans to open this summer.** Watch your email for an Open House announcement! Please pray with us for the Lord to direct our steps as we interview for staff to serve in this new location. Please consider how you might help us with funding to purchase needed medical equipment, furniture, and fixtures. We know the One who owns the cattle on a thousand hills, and as Pastor Shea Sumlin of Northway Church has prayed for us, "May the Lord move upon His people to sell a few cows and help us fund this thing!"

Our ministry family means the world to us! Your prayers, your encouraging words, your responsiveness to send diapers and wipes, make face masks for our staff and patients, and provide financial support encourages our hearts and emboldens us to stay true to our calling. We prayerfully ask you to consider how you might go deeper in getting involved for life.

Serving with Joy,

Karolyn Lane
Director of Outreach

YOUR SUPPORT IS NEEDED!



Become an essential **monthly partner**, or give a **strategic one-time gift**.



Become a **prayer partner**, and receive weekly email prayer updates.



Volunteer

For more information, visit www.GetInvolvedForLife.com or call Vicki King at 972-636-4473.

"All glory to God, who is able, through His mighty power at work within us, to accomplish infinitely more than we might ask or think." Ephesians 3:20, NLT

INVOLVED FOR LIFE, INC.
525 N. Ervay St.
Dallas, TX 75201
Mid-Year Update 2020

NON-PROFIT ORG.
U.S. POSTAGE
PAID
DALLAS, TX
PERMIT NO. 2212

IFLI doing ministry as



**the
source**

Your Place for Women's Health

THE SOURCE - SOUTHWEST DALLAS NEW SATELLITE LOCATION OPENING SOON!



2715 Bolton Boone Drive, Desoto, TX 75115

UPCOMING EVENTS

- See inside for details regarding our new SW Dallas satellite location! Watch for our **Open House** announcement.
- **Thursday, August 27th: Light of Life Gala - Westin Galleria**
- **Monday, October 19th: Golf Roundup for Life - Bent Tree Country Club**

Visit www.GetInvolvedforLife.com for more details.